

WHAT IS A GASTROENTEROLOGIST?

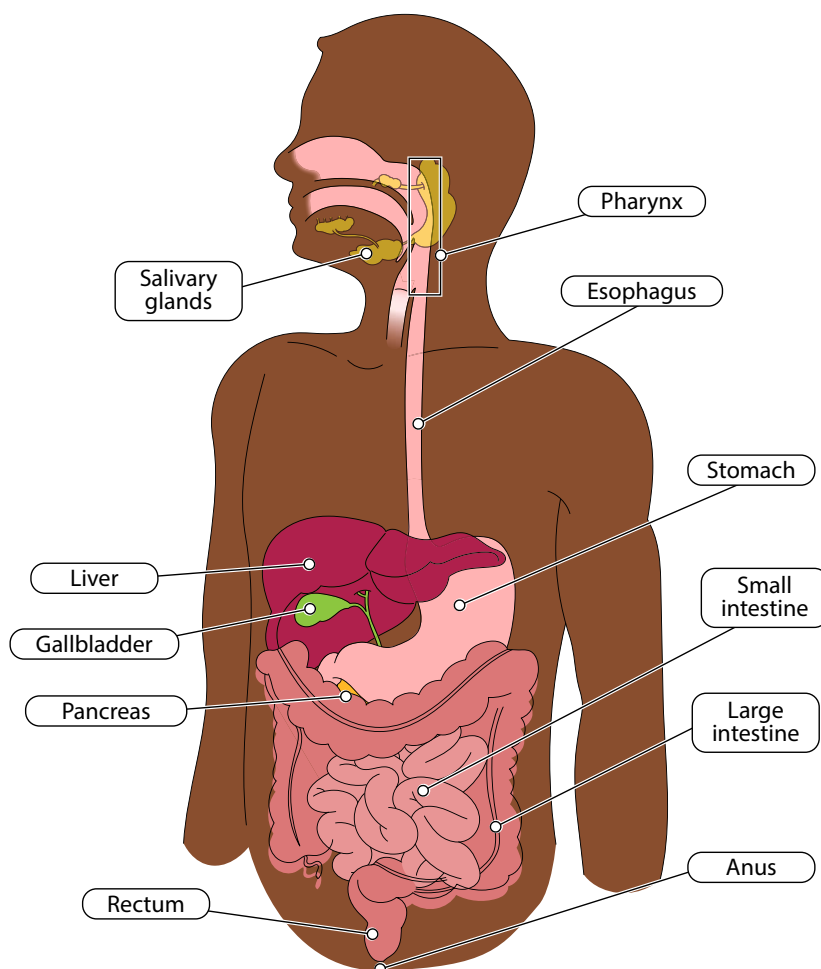
A **gastroenterologist** is a medical expert in GI system which includes the esophagus, stomach and intestines.

A gastroenterologist takes care of problems that can be found in the esophagus, stomach, intestines and colon, as well as the liver and the pancreas. A gastroenterologist can even subspecialize in terms of one of these things.

COMMON DISEASES TREATED BY GASTROENTEROLOGISTS

- ▶ Gastroesophageal reflux
- ▶ Colon cancer
- ▶ Esophageal, stomach and duodenal ulcers
- ▶ Inflammatory bowel disease (Crohn's disease and ulcerative colitis)
- ▶ Hepatitis

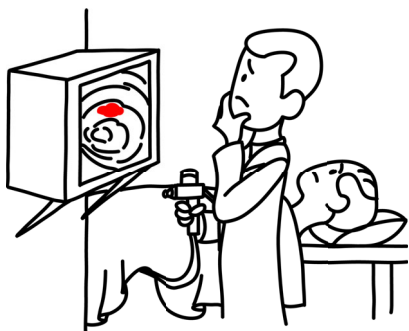
GASTROINTESTINAL TRACT



HOW DO GASTROENTEROLOGISTS DIAGNOSE PATIENTS?

ENDOSCOPY/COLONOSCOPY

A procedure in which a small scope (flexible light and camera) is introduced into the body to give a view of its internal parts.



BLOOD WORK

looking for inflammation in the GI system (ESR or C-reactive protein); if suspicious tumors are noted on endoscopy or colonoscopy, a biopsy will be sent to a pathologist who will look at it under a microscope to look for abnormal cells.

